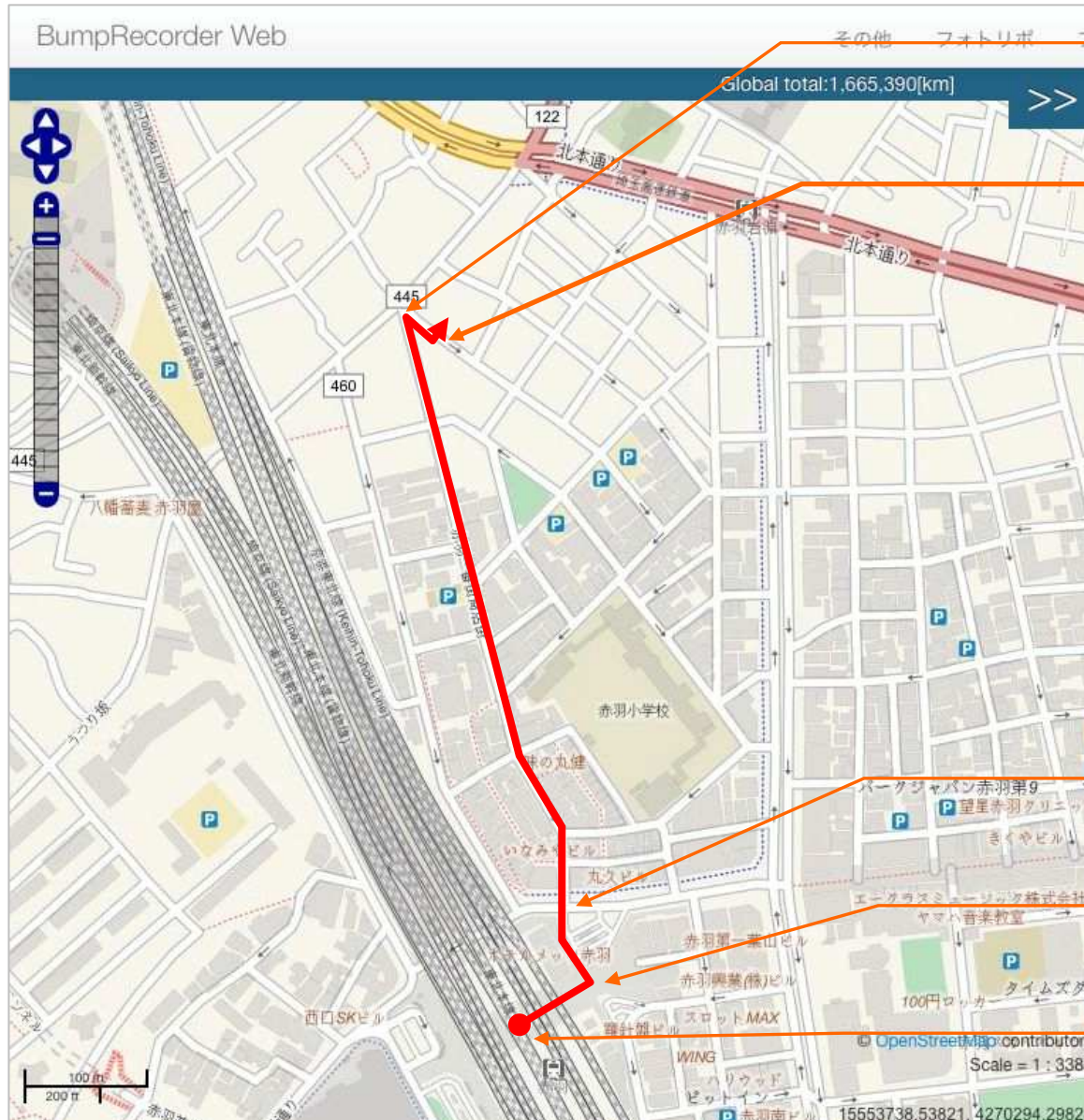


To **BumpRecorder** office from Akabane station JR line



4) At the end of "Ichiban Gai" street, turn right

5) Behind of the Italian Restaurant "Katsu Kitchen", that is **BumpRecorder** office

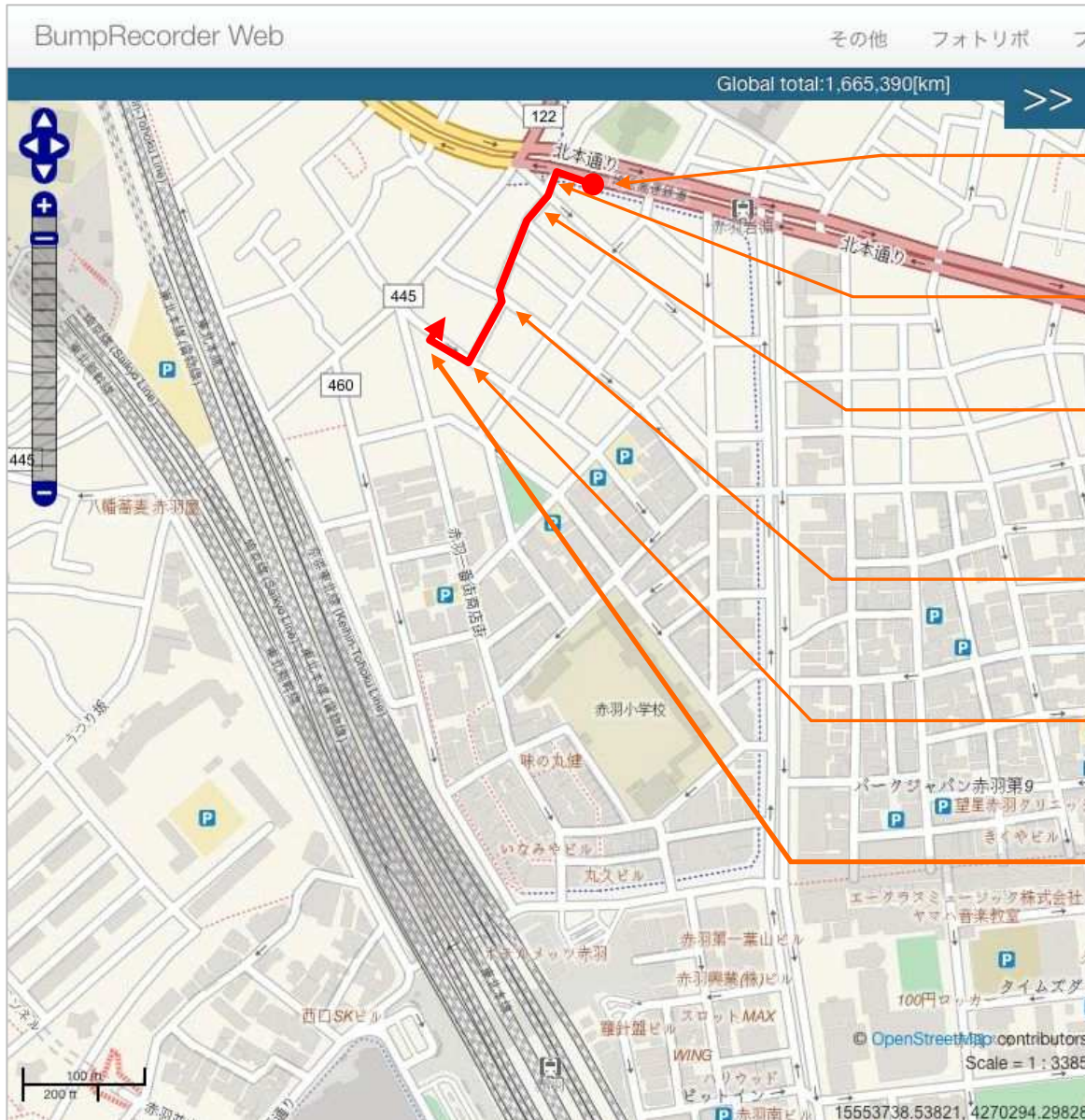
Akabane 1-59-6, Wako Akabane Building 102,
Kita ward, Tokyo, Japan
BumpRecorder Co., Ltd.

3) Cross the intersection, go to "Akabane Ichiban Gai" street

2) Go out station building, then turn left

1) At Akabane station JR line north exit, turn right.

From Akabane-Iwabuchi station Namboku subway line



- 1) Go up stairs to No.2 exit, then turn left
- 2) Turn left before the intersection
- 3) Go straight narrow road with looking Cleaning shop at left hand side
- 4) Go straight, diagonally left front
- 5) Turn right at end of the narrow road
- 6) Behind of the Italian Restaurant "Katsu Kitchen", that is **BumpRecorder** office

Akabane 1-59-6, Wako Akabane Building 102,
 Kita ward, Tokyo, Japan
BumpRecorder Co., Ltd.